


Luna Trio 26x92

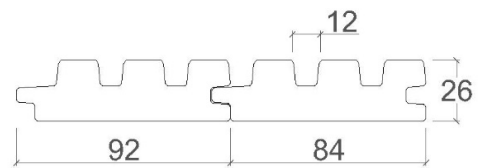


GLADDING & PANELING

Luna Trio 26x92 is a sophisticated 3D profile of Nordic Pine. It creates a visually elegant and pleasant decorative surface both indoor and outdoor

PRODUCT DETAILS

Size	26x92
Class	LunaThermo-D
Surface	Planed
Species	Pine, <i>Pinus sylvestris</i>
Lenghts	3,0-4,5 m (availability varies) Length package in 30 cm modules
Utility data	Coverage width 84 mm, 11,9 rm/m ² Weight average ~1,0 kg/m ~12,4 kg/m ²
Packaging	Package size 240 pcs (half package) 4 pcs/bundle, 60 bundles/package. Package covered by Lunawood plastic hood on 5 sides
Article	26x92 Trio Thermo-D RW A
Product specifications	Tolerances, quality and installation based on. Lunawood general rules and instructions. Nominal size: 32x100
	Also available fire protected



LUNAWOOD TECHNICAL DATASHEET

Essential Characteristics	Pine (<i>Pinus sylvestris</i>)	Harmonized European standard
Density	420 kg / m ³	SFS-EN 317
Reaction to fire class	D - s2, d0	SFS-EN 13502-1 + A1
Screw traction resistance	19,45 ± 1,47 N/mm ²	SFS-EN 13446
Thermal conductivity	0,09 W/(m·K)	EN ISO 13787 + EN 12667
Durability class	Class 2 Thermo-D	EN 350-1
Use class	Class 3 Thermo-D	EN 335
Stability, shrinking and swelling	Tangential fibre direction 4 % Radial fibre direction 2 %	SFS-EN 317
Equilibrium Moisture	6,4 %	EN 13183-1
Brinell Hardness	1,4 N/mm ²	SFS-EN 1534
Janka	1700 N	ASTM D143-94
TVOC	Thermo-D 0,077 mg/m ³ h	ISO 16000-9:2006 SFS-EN 16516:2017
CO2 emissions (EPD)	117 kg CO2 eq/m ³	Lunawood EPD

Use QR code by phone or click it to open to Your browser



Product documents



Design tools

Version: 11/2023