

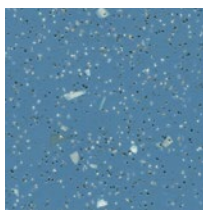
# safestep® R11 safestep® R12



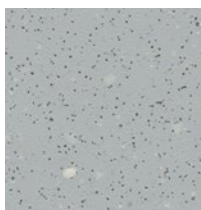
With a palette of 9 colours available in both constructions, the Safestep ranges offer increased slip resistance for areas with increased slip risk due to contamination issues (R11) and intensive use and high contamination areas (R12).



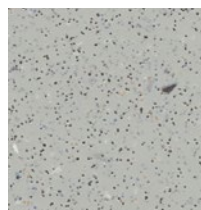
Description	Sheet safety vinyl	
Dimensions	Roll width 2m Roll length 20-27 lm	
Total thickness	ISO 1765	2.0mm
Thickness wear layer	EN-ISO 24340	0.7mm
Collection size	9 / 9	
Application	EN 10874	Class 34/43
Slip resistance	EN 13845 Annex C	ESf
CE	EN 14041	
Reaction to fire	AS 9239-1	CRF >8kW/m <sup>2</sup> , smk Dvlp <750%min
Slip resistance	AS 4586:2013	R11 R12



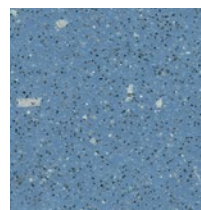
174642 | R11 cloudy LRV 20



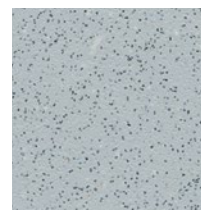
174862 | R11 silver grey LRV 42



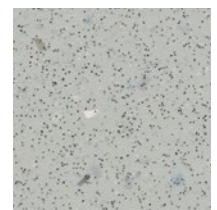
174032 | R11 smoke LRV 46



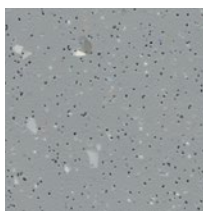
175642 | R12 cloudy LRV 20



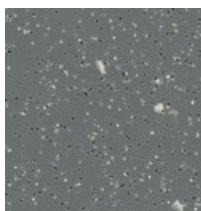
175862 | R12 silver grey LRV 42



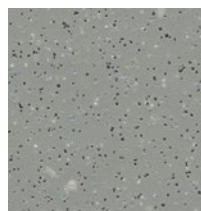
175032 | R12 smoke LRV 45



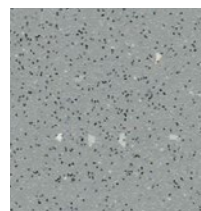
174922 | R11 concrete LRV 28



174092 | R11 granite LRV 15



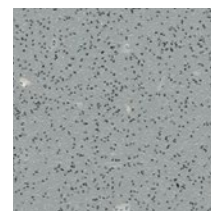
174752 | R11 slate grey LRV 29



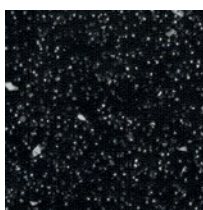
175922 | R12 concrete LRV 28



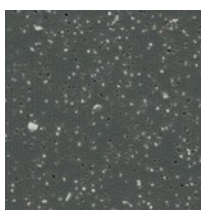
175092 | R12 granite LRV 15



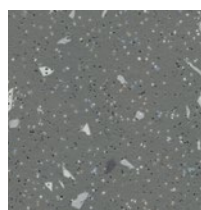
175752 | R12 slate grey LRV 29



174992 | R11 charcoal LRV 6



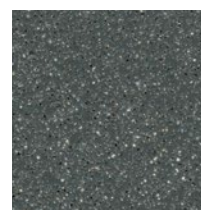
174592 | R11 lava LRV 10



174952 | R11 elephant LRV 19



175992 | R12 charcoal LRV 7



175592 | R12 lava LRV 10



175952 | R12 elephant LRV 19

Our recommended adhesive is 540 Eurosafe Special or 640 Eurostar Special. Full technical specifications are available at [www.forbo-flooring.com.au/downloads](http://www.forbo-flooring.com.au/downloads).  
Please note: Digital representations may vary from the actual product.  
Please order a sample to see the full effect. Contact 1800 224 471.