



# OPEN AIR

Neutrals

Interface®

---

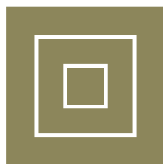
# Table of Contents

---



Organic  
Patterns

**Pages 3 - 24**



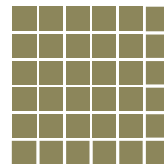
Geometric  
Patterns

**Pages 25 - 36**



Linear  
Patterns

**Pages 37 - 40**



Textured  
Patterns

**Pages 41 - 54**

---

## Why Interface

**Pages 57-58**

## **Smart design. Unlimited opportunities.**

Introducing Open Air™, an expansive platform of affordable, hard-working carpet styles designed with open spaces in mind. Available in our best-selling neutrals, Open Air products integrate effortlessly with the Interface system of solutions to elevate any space. The biggest advantage of this in-demand collection? Innovation in both design and manufacturing allows us to create the same high-quality, high-performance carpet products you expect at one low price point.



# Organic Patterns

402		405		410		416		421
404		409		411		420		422











# Open Air™ 402 Colorline



106736 BLACK



106737 IRON



106738 FLANNEL



106739 CHARCOAL



106740 NATURAL



106741 NICKEL



106742 GRANITE



106743 STONE



106744 LINEN

## Specifications

Modular, 25cm x 1m	163320AK0G
Backing System	CQuest™GB
Yarn Manufacturer	Aquaflil
Yarn System	100% Recycled Content Nylon
Color System	100% Solution Dye
Construction	Tufted Textured Loop
Preservative Protection	Intersept®
Soil/Stain Protection	Protekt2™
Pile Thickness	0.084 in., 2.1 mm
Pile Density	8,143
Total Recycled Content	83%
Indoor Air Quality	CRI Green Label Plus #GLP0820

## Installation Methods



ASHLAR

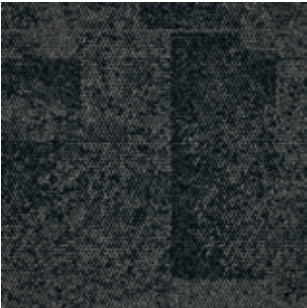


HERRINGBONE



**BROWSE IMAGES**  
**ORDER SAMPLES**

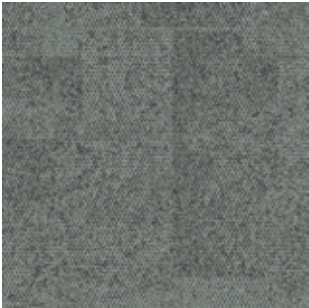
# Open Air™ 404 Colorline



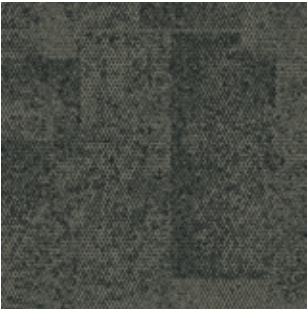
106745 BLACK



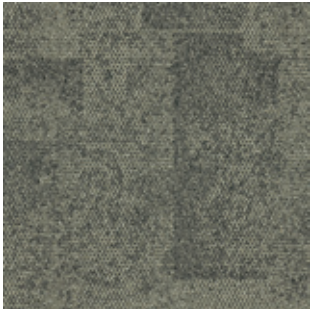
106746 IRON



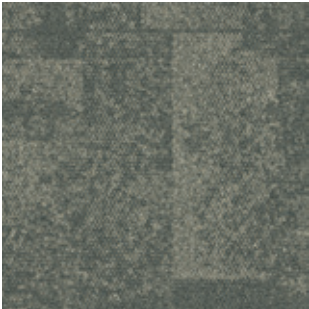
106747 FLANNEL



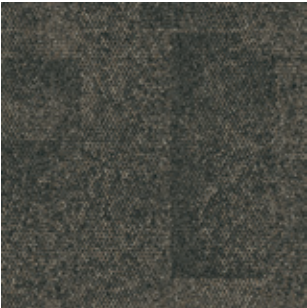
106748 CHARCOAL



106749 NATURAL



106750 NICKEL



106751 GRANITE



106752 STONE



106753 LINEN

## Specifications **i2**

Modular, 50cm x 50cm	163330250G
Backing System	CQuest™GB
Yarn Manufacturer	Aquafil
Yarn System	100% Recycled Content Nylon
Color System	100% Solution Dye
Construction	Tufted Textured Loop
Preservative Protection	Intersept®
Soil/Stain Protection	Protekt2™
Pile Thickness	0.07 in., 1.8 mm
Pile Density	9,257
Total Recycled Content	83%
Indoor Air Quality	CRI Green Label Plus #GLP0820

## Installation Methods



NON DIRECTIONAL



**BROWSE IMAGES**  
**ORDER SAMPLES**





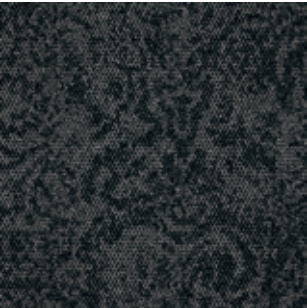
PRODUCT OPEN AIR 404 COLOR 106750 NICKEL INSTALLED NON DIRECTIONAL



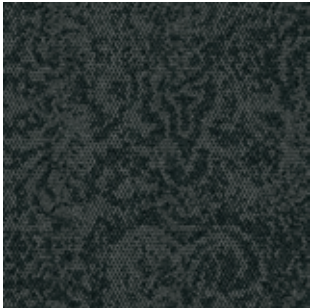




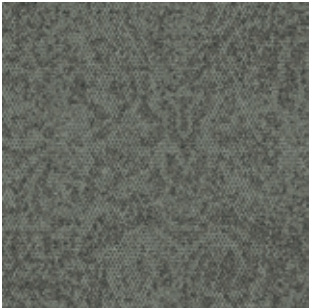
# Open Air™ 405 Colorline



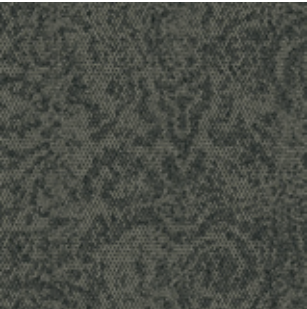
106754 BLACK



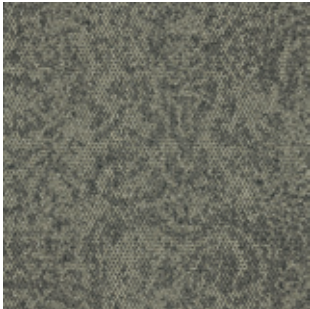
106755 IRON



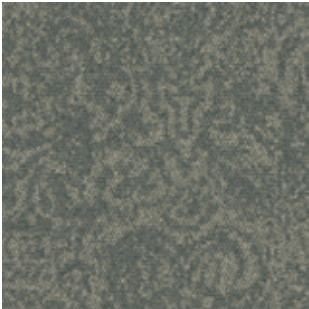
106756 FLANNEL



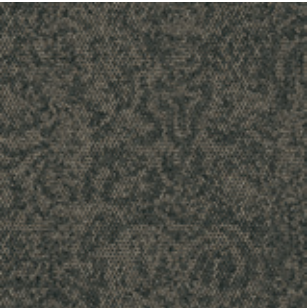
106757 CHARCOAL



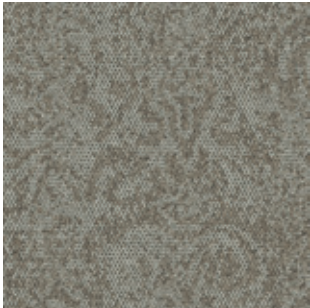
106758 NATURAL



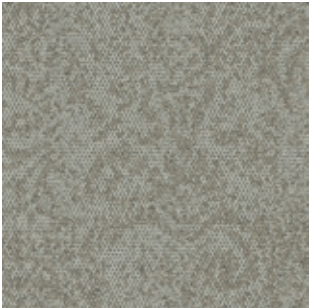
106759 NICKEL



106760 GRANITE



106761 STONE



106762 LINEN

## Specifications **i2**

Modular, 50cm x 50cm	163340250G
Backing System	CQuest™GB
Yarn Manufacturer	Aquafil
Yarn System	100% Recycled Content Nylon
Color System	100% Solution Dye
Construction	Tufted Textured Loop
Preservative Protection	Intersept®
Soil/Stain Protection	Protekt2™
Pile Thickness	0.079 in., 2.0 mm
Pile Density	8,203
Total Recycled Content	83%
Indoor Air Quality	CRI Green Label Plus #GLP0820

## Installation Methods



NON DIRECTIONAL



**BROWSE IMAGES**  
**ORDER SAMPLES**

# Open Air™ 409 Colorline



106957 BLACK



106958 IRON



106959 FLANNEL



106960 CHARCOAL



106961 NATURAL



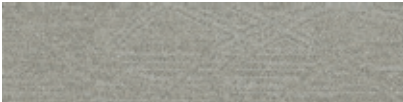
106962 NICKEL



106963 GRANITE



106964 STONE



106965 LINEN

## Specifications

Modular, 25cm x 1m	163390AK0G
Backing System	CQuest™GB
Yarn Manufacturer	Aquafil
Yarn System	100% Recycled Content Nylon
Color System	100% Solution Dye
Construction	Tufted Textured Loop
Preservative Protection	Intersept®
Soil/Stain Protection	Protekt2™
Pile Thickness	0.093 in., 2.4 mm
Pile Density	6,968
Total Recycled Content	83%
Indoor Air Quality	CRI Green Label Plus #GLP0820

## Installation Methods



ASHLAR



HERRINGBONE



**BROWSE IMAGES**  
**ORDER SAMPLES**









# Open Air™ 410 Colorline



106966 BLACK



106967 IRON



106968 FLANNEL



106969 CHARCOAL



106970 NATURAL



106971 NICKEL



106972 GRANITE



106973 STONE



106974 LINEN

## Specifications

Modular, 25cm x 1m	163400AK0G
Backing System	CQuest™GB
Yarn Manufacturer	Aquafil
Yarn System	100% Recycled Content Nylon
Color System	100% Solution Dye
Construction	Tufted Textured Loop
Preservative Protection	Intersept®
Soil/Stain Protection	Protekt2™
Pile Thickness	0.093 in., 2.4 mm
Pile Density	6,968
Total Recycled Content	83%
Indoor Air Quality	CRI Green Label Plus #GLP0820

## Installation Methods



ASHLAR



HERRINGBONE



**BROWSE IMAGES**  
**ORDER SAMPLES**



# Open Air™ 411 Colorline



106976 BLACK



106977 IRON



106978 FLANNEL



106979 CHARCOAL



106980 NATURAL



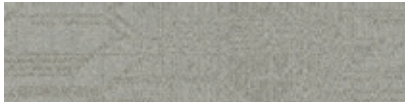
106981 NICKEL



106982 GRANITE



106983 STONE



106984 LINEN

## Specifications

Modular, 25cm x 1m	163410AK0G
Backing System	CQuest™GB
Yarn Manufacturer	Aquafl
Yarn System	100% Recycled Content Nylon
Color System	100% Solution Dye
Construction	Tufted Textured Loop
Preservative Protection	Intersept®
Soil/Stain Protection	Protekt2™
Pile Thickness	0.093 in., 2.4 mm
Pile Density	6,968
Total Recycled Content	83%
Indoor Air Quality	CRI Green Label Plus #GLP0820

## Installation Methods



ASHLAR



HERRINGBONE



**BROWSE IMAGES**  
**ORDER SAMPLES**





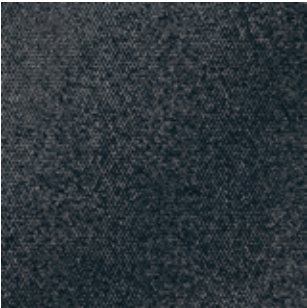
**PRODUCT** OPEN AIR 411 **COLOR** 106978 FLANNEL **INSTALLED** ASHLAR  
**PRODUCT** ON LINE™ **COLOR** 103798 LIME **INSTALLED** PATTERN BY TILE



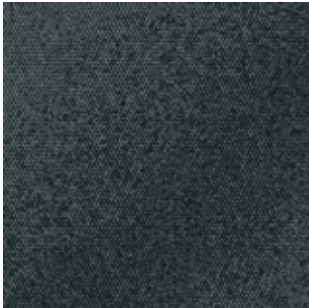




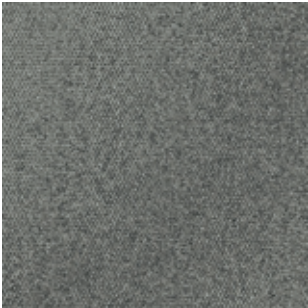
# Open Air™ 416 Colorline



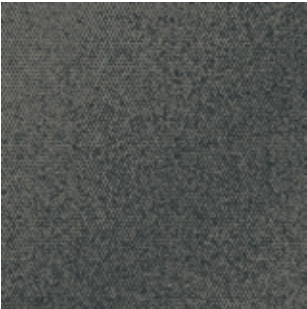
107021 BLACK



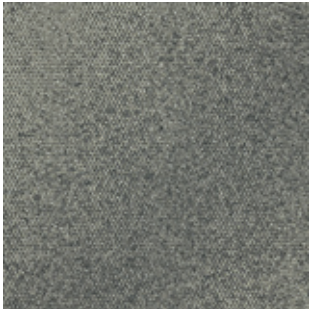
107022 IRON



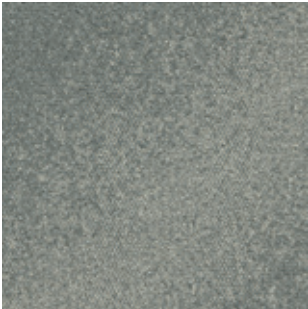
107023 FLANNEL



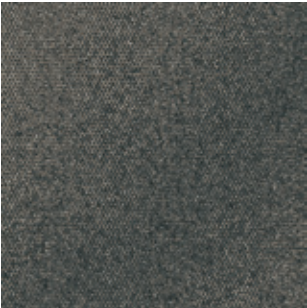
107024 CHARCOAL



107025 NATURAL



107026 NICKEL



107027 GRANITE



107028 STONE



107029 LINEN

Shared elements create visual connection and pattern progression from **Open Air 416** to **Open Air 417**.  
Reference page 55 for an example.

## Specifications

Modular, 50cm x 50cm	147500250G
Backing System	CQuest™GB
Yarn Manufacturer	Aquafil
Yarn System	100% Recycled Content Nylon
Color System	100% Solution Dye
Construction	Tufted Textured Loop
Preservative Protection	Intersept®
Soil/Stain Protection	Protekt2™
Pile Thickness	0.093 in., 2.4 mm
Pile Density	7,355
Total Recycled Content	83%
Indoor Air Quality	CRI Green Label Plus #GLP0820

## Installation Methods

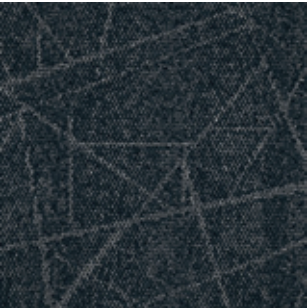


NON DIRECTIONAL

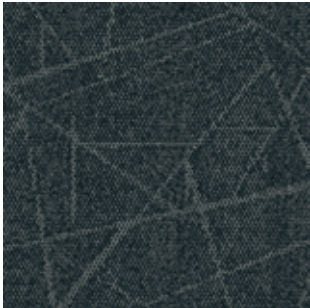


**BROWSE IMAGES**  
**ORDER SAMPLES**

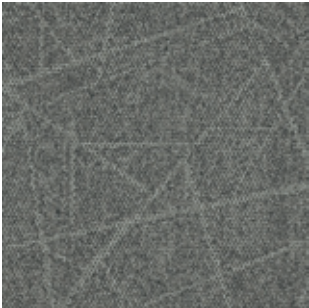
# Open Air™ 420 Colorline



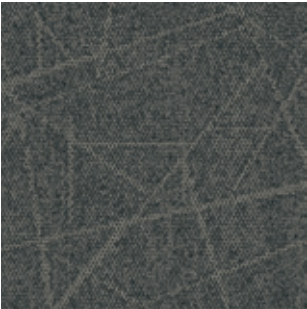
107057 BLACK



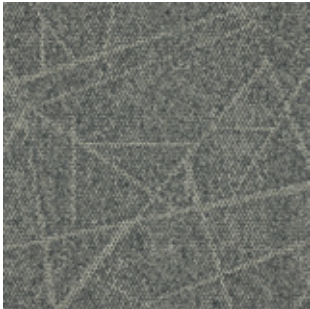
107058 IRON



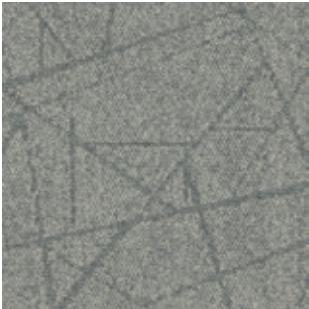
107059 FLANNEL



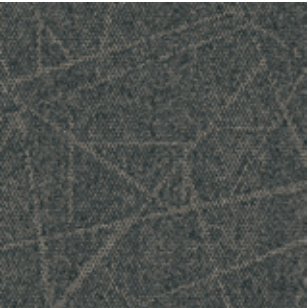
107060 CHARCOAL



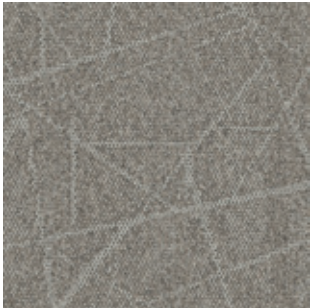
107061 NATURAL



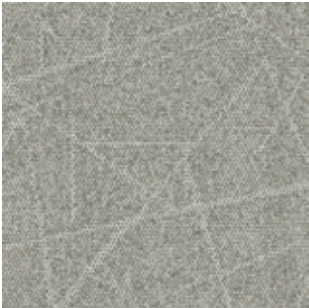
107062 NICKEL



107063 GRANITE



107064 STONE



107065 LINEN

## Specifications

Modular, 50cm x 50cm	147540250G
Backing System	CQuest™GB
Yarn Manufacturer	Aquafil
Yarn System	100% Recycled Content Nylon
Color System	100% Solution Dye
Construction	Tufted Textured Loop
Preservative Protection	Intersept®
Soil/Stain Protection	Protekt <sup>2</sup> ™
Pile Thickness	0.093 in., 2.4 mm
Pile Density	6,968
Total Recycled Content	83%
Indoor Air Quality	CRI Green Label Plus #GLP0820

## Installation Methods



**BROWSE IMAGES**  
**ORDER SAMPLES**



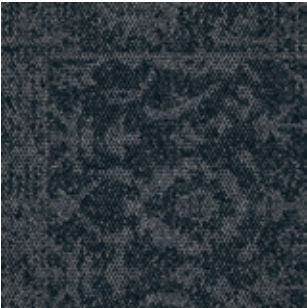








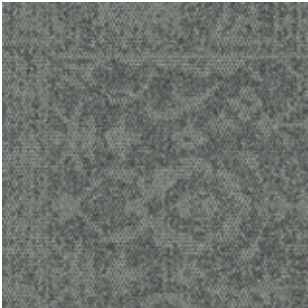
# Open Air™ 421 Colorline



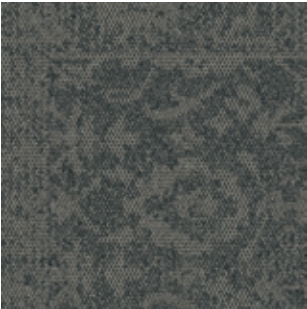
107066 BLACK



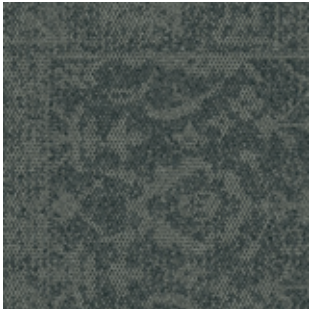
107067 IRON



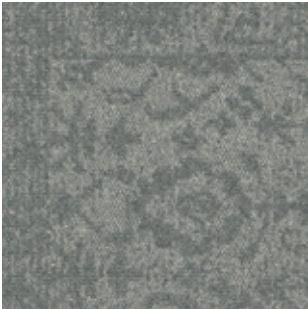
107068 FLANNEL



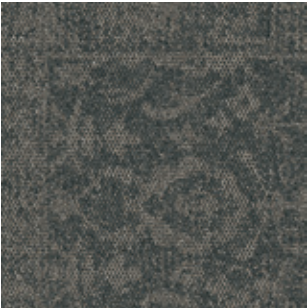
107069 CHARCOAL



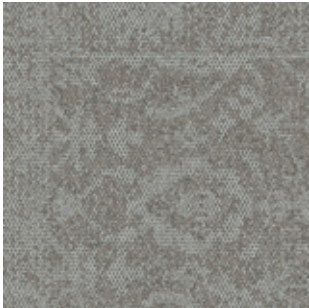
107070 NATURAL



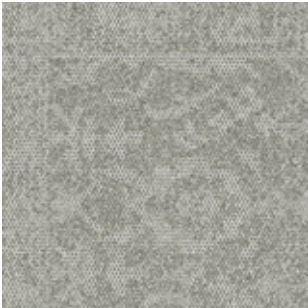
107071 NICKEL



107072 GRANITE



107073 STONE



107074 LINEN

## Specifications

Modular, 50cm x 50cm	147550250G
Backing System	CQuest™GB
Yarn Manufacturer	Aquafil
Yarn System	100% Recycled Content Nylon
Color System	100% Solution Dye
Construction	Tufted Textured Loop
Preservative Protection	Intersept®
Soil/Stain Protection	Protekt2™
Pile Thickness	0.093 in., 2.4 mm
Pile Density	6,968
Total Recycled Content	83%
Indoor Air Quality	CRI Green Label Plus #GLP0820

## Installation Methods



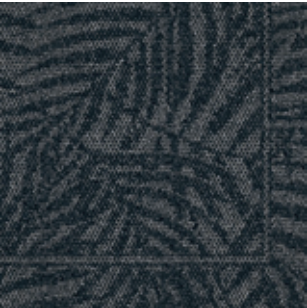
NON DIRECTIONAL



**BROWSE IMAGES**  
**ORDER SAMPLES**



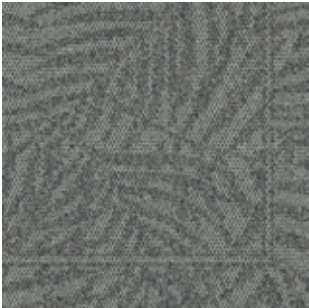
# Open Air™ 422 Colorline



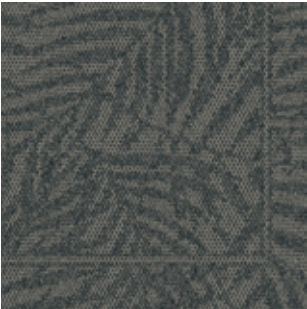
107075 BLACK



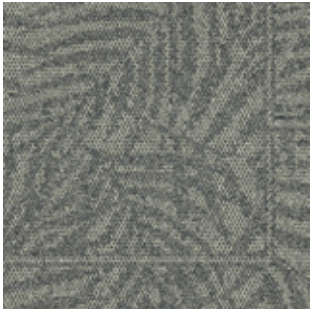
107076 IRON



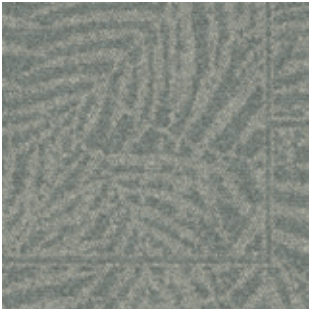
107077 FLANNEL



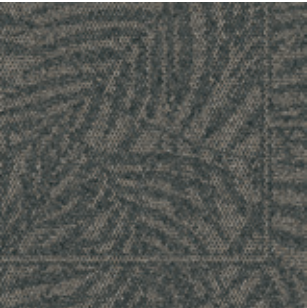
107078 CHARCOAL



107079 NATURAL



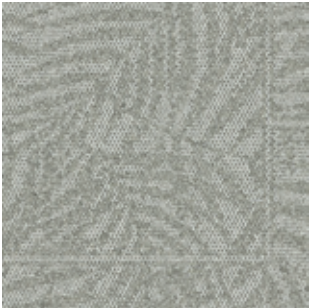
107080 NICKEL



107081 GRANITE



107082 STONE



107083 LINEN

## Specifications

Modular, 50cm x 50cm	147560250G
Backing System	CQuest™GB
Yarn Manufacturer	Aquafil
Yarn System	100% Recycled Content Nylon
Color System	100% Solution Dye
Construction	Tufted Textured Loop
Preservative Protection	Intersept®
Soil/Stain Protection	Protekt <sup>2</sup> ™
Pile Thickness	0.093 in., 2.4 mm
Pile Density	6,968
Total Recycled Content	83%
Indoor Air Quality	CRI Green Label Plus #GLP0820

## Installation Methods



NON DIRECTIONAL



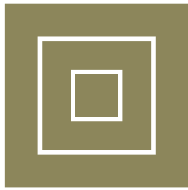
BROWSE IMAGES  
ORDER SAMPLES





**PRODUCT** OPEN AIR 422 **COLOR** 107077 FLANNEL **INSTALLED** NON DIRECTIONAL  
**PRODUCT** NIGHT FLIGHT™ **COLOR** 105704 AFTER DARK **INSTALLED** BRICK





# Geometric Patterns

403		413		417
412		414		



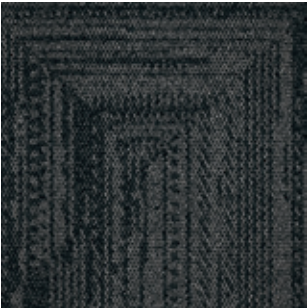




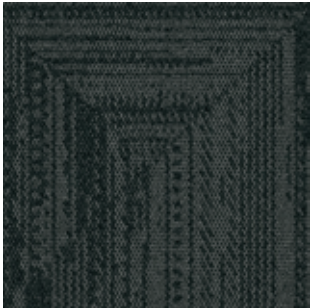




# Open Air™ 403 Colorline



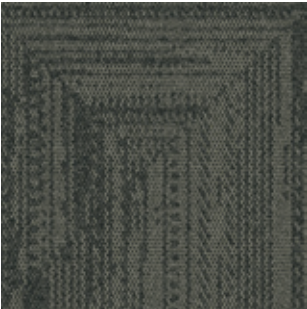
106727 BLACK



106728 IRON



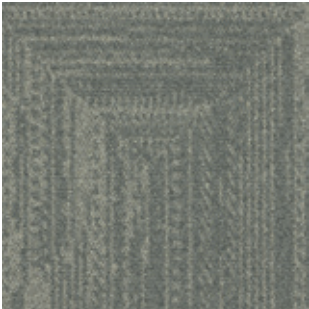
106729 FLANNEL



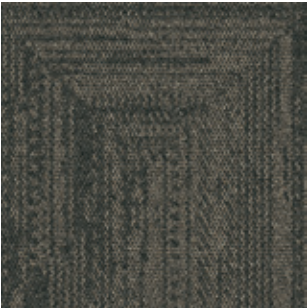
106730 CHARCOAL



106731 NATURAL



106732 NICKEL



106733 GRANITE



106734 STONE



106735 LINEN

## Specifications **i2**

Modular, 50cm x 50cm	163310250G
Backing System	CQuest™GB
Yarn Manufacturer	Aquafil
Yarn System	100% Recycled Content Nylon
Color System	100% Solution Dye
Construction	Tufted Textured Loop
Preservative Protection	Intersept®
Soil/Stain Protection	Protekt <sup>2</sup> ™
Pile Thickness	0.083 in., 2.1 mm
Pile Density	8,241
Total Recycled Content	83%
Indoor Air Quality	CRI Green Label Plus #GLP0820

## Installation Methods

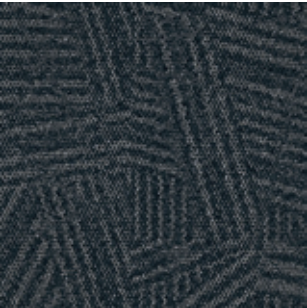


NON DIRECTIONAL

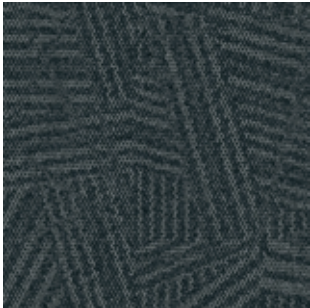


**BROWSE IMAGES**  
**ORDER SAMPLES**

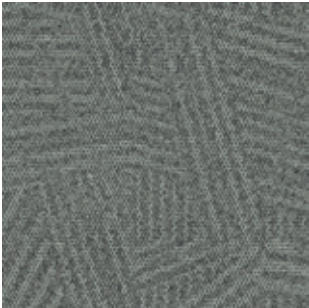
# Open Air™ 412 Colorline



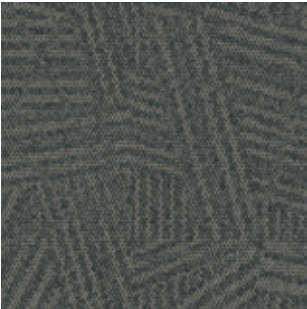
106985 BLACK



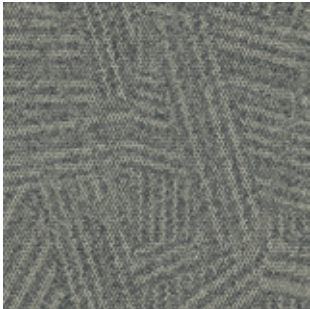
106986 IRON



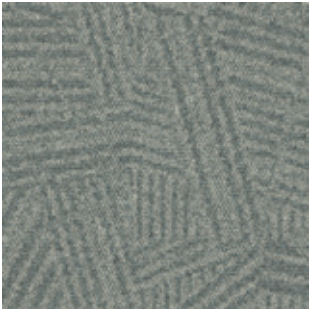
106987 FLANNEL



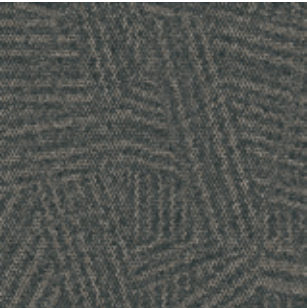
106988 CHARCOAL



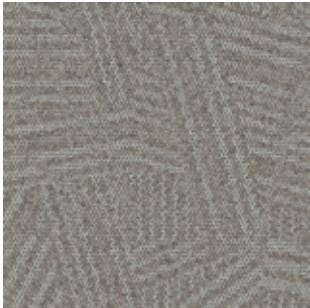
106989 NATURAL



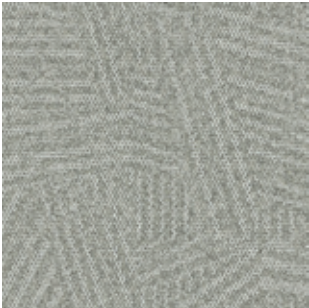
106990 NICKEL



106991 GRANITE



106992 STONE



106993 LINEN

## Specifications

Modular, 50cm x 50cm	163420250G
Backing System	CQuest™GB
Yarn Manufacturer	Aquafil
Yarn System	100% Recycled Content Nylon
Color System	100% Solution Dye
Construction	Tufted Textured Loop
Preservative Protection	Intersept®
Soil/Stain Protection	Protekt <sup>2</sup> ™
Pile Thickness	0.093 in., 2.4 mm
Pile Density	7,355
Total Recycled Content	83%
Indoor Air Quality	CRI Green Label Plus #GLP0820

## Installation Methods



MONOLITHIC



**BROWSE IMAGES**  
**ORDER SAMPLES**





**PRODUCT** OPEN AIR 412 **COLOR** 106985 BLACK **INSTALLED** MONOLITHIC  
**PRODUCT** AE317 **COLOR** 105829 AZURE **INSTALLED** ASHLAR







# Open Air™ 413 Colorline



106994 BLACK



106995 IRON



106996 FLANNEL



106997 CHARCOAL



106998 NATURAL



106999 NICKEL



107000 GRANITE



107001 STONE



107002 LINEN

## Specifications

Modular, 50cm x 50cm	163430250G
Backing System	CQuest™GB
Yarn Manufacturer	Aquafil
Yarn System	100% Recycled Content Nylon
Color System	100% Solution Dye
Construction	Tufted Textured Loop
Preservative Protection	Intersept®
Soil/Stain Protection	Protekt <sup>2</sup> ™
Pile Thickness	0.093 in., 2.4 mm
Pile Density	6,968
Total Recycled Content	83%
Indoor Air Quality	CRI Green Label Plus #GLP0820

## Installation Methods



MONOLITHIC



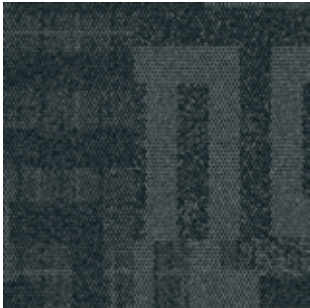
**BROWSE IMAGES**  
**ORDER SAMPLES**



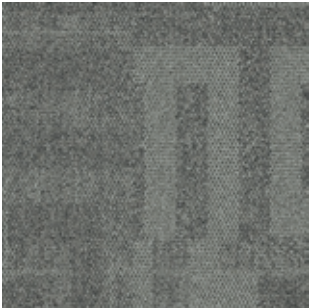
# Open Air™ 414 Colorline



107003 BLACK



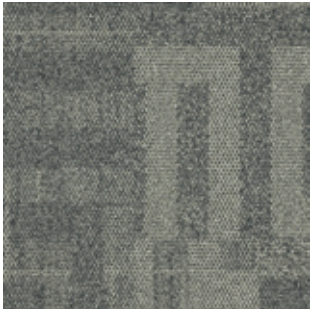
107004 IRON



107005 FLANNEL



107006 CHARCOAL



107007 NATURAL



107008 NICKEL



107009 GRANITE



107010 STONE



107011 LINEN

## Specifications **i2**

Modular, 50cm x 50cm	163440250G
Backing System	CQuest™GB
Yarn Manufacturer	Aquafil
Yarn System	100% Recycled Content Nylon
Color System	100% Solution Dye
Construction	Tufted Textured Loop
Preservative Protection	Intersept®
Soil/Stain Protection	Protekt <sup>2</sup> ™
Pile Thickness	0.093 in., 2.4 mm
Pile Density	6,968
Total Recycled Content	83%
Indoor Air Quality	CRI Green Label Plus #GLP0820

## Installation Methods



NON DIRECTIONAL



**BROWSE IMAGES**  
**ORDER SAMPLES**





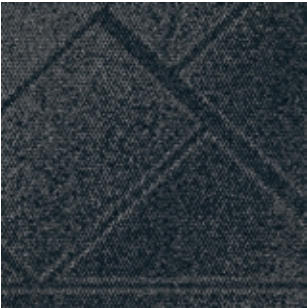
**PRODUCT** OPEN AIR 414 **COLOR** 107007 NATURAL **INSTALLED** NON DIRECTIONAL  
**PRODUCT** AE317 **COLOR** 105824 PERSIMMON **INSTALLED** ASHLAR



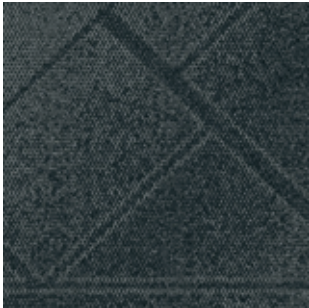




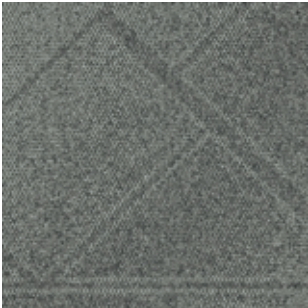
# Open Air™ 417 Colorline



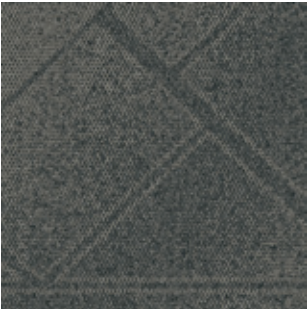
107030 BLACK



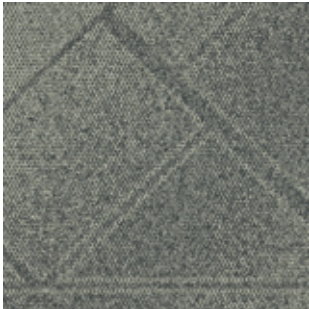
107031 IRON



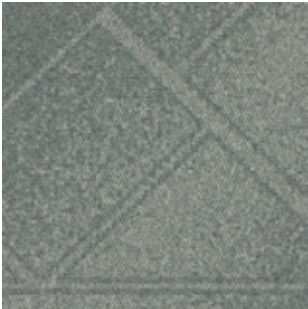
107032 FLANNEL



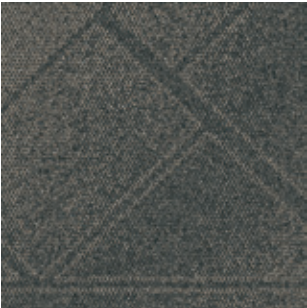
107033 CHARCOAL



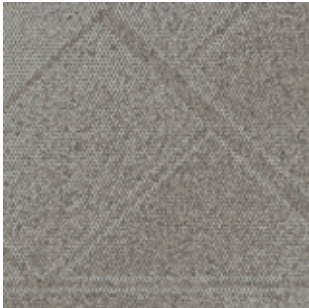
107034 NATURAL



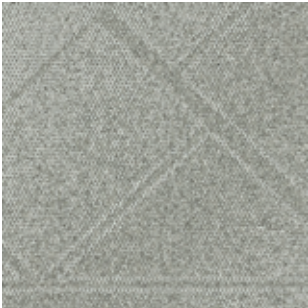
107035 NICKEL



107036 GRANITE



107037 STONE



107038 LINEN

Shared elements create visual connection and pattern progression from **Open Air 416** to **Open Air 417**.  
Reference page 55 for an example.

## Specifications

Modular, 50cm x 50cm	147510250G
Backing System	CQuest™GB
Yarn Manufacturer	Aquafil
Yarn System	100% Recycled Content Nylon
Color System	100% Solution Dye
Construction	Tufted Textured Loop
Preservative Protection	Intersept®
Soil/Stain Protection	Protekt™
Pile Thickness	0.093 in., 2.4 mm
Pile Density	6,968
Total Recycled Content	83%
Indoor Air Quality	CRI Green Label Plus #GLP0820

## Installation Methods

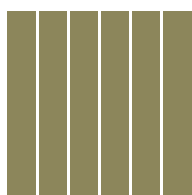


NON DIRECTIONAL



**BROWSE IMAGES**  
**ORDER SAMPLES**





# Linear Patterns

| 423 |



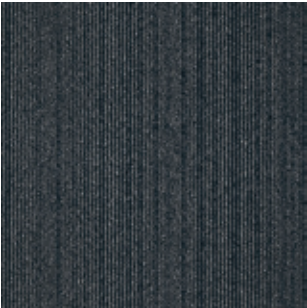








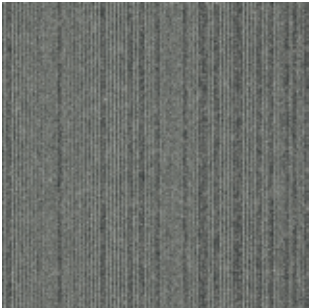
# Open Air™ 423 Colorline



107084 BLACK



107085 IRON



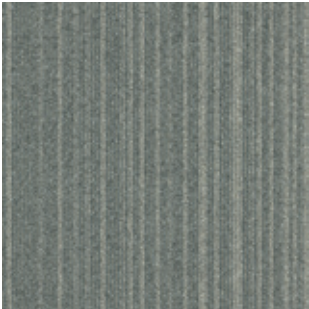
107086 FLANNEL



107087 CHARCOAL



107088 NATURAL



107089 NICKEL



107090 GRANITE



107091 STONE



107092 LINEN

## Specifications

Modular, 50cm x 50cm	147570250G
Backing System	CQuest™GB
Yarn Manufacturer	Aquafil
Yarn System	100% Recycled Content Nylon
Color System	100% Solution Dye
Construction	Tufted Textured Loop
Preservative Protection	Intersept®
Soil/Stain Protection	Protekt <sup>2</sup> ™
Pile Thickness	0.093 in., 2.4 mm
Pile Density	6,968
Total Recycled Content	83%
Indoor Air Quality	CRI Green Label Plus #GLP0820

## Installation Methods



ASHLAR



BRICK



MONOLITHIC



NON DIRECTIONAL

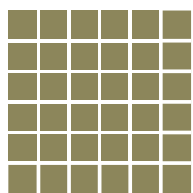


QUARTER-TURN



**BROWSE IMAGES**  
**ORDER SAMPLES**





# Textured Patterns

401		408		418
407		415		419







# Open Air™ 401 Colorline



106772 BLACK



106773 IRON



106774 FLANNEL



106775 CHARCOAL



106776 NATURAL



106777 NICKEL



106778 GRANITE



106779 STONE



106780 LINEN

## Specifications

Modular, 25cm x 1m	163360AK0G
Backing System	CQuest™GB
Yarn Manufacturer	Aquafl
Yarn System	100% Recycled Content Nylon
Color System	100% Solution Dye
Construction	Tufted Textured Loop
Preservative Protection	Intersept®
Soil/Stain Protection	Protekt2™
Pile Thickness	0.076 in., 1.9 mm
Pile Density	8,526
Total Recycled Content	83%
Indoor Air Quality	CRI Green Label Plus #GLP0820

## Installation Methods



ASHLAR



HERRINGBONE



**BROWSE IMAGES**  
**ORDER SAMPLES**



# Open Air™ 407 Colorline



106939 BLACK



106940 IRON



106941 FLANNEL



106942 CHARCOAL



106943 NATURAL



106944 NICKEL



106945 GRANITE



106946 STONE



106947 LINEN

## Specifications

Modular, 25cm x 1m	163370AK0G
Backing System	CQuest™GB
Yarn Manufacturer	Aquafil
Yarn System	100% Recycled Content Nylon
Color System	100% Solution Dye
Construction	Tufted Textured Loop
Preservative Protection	Intersept®
Soil/Stain Protection	Protekt <sup>2</sup> ™
Pile Thickness	0.093 in., 2.4 mm
Pile Density	6,968
Total Recycled Content	83%
Indoor Air Quality	CRI Green Label Plus #GLP0820

## Installation Methods



ASHLAR



HERRINGBONE



**BROWSE IMAGES**  
**ORDER SAMPLES**

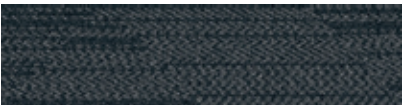








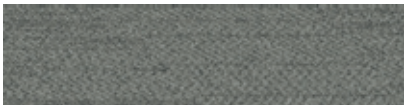
# Open Air™ 408 Colorline



106948 BLACK



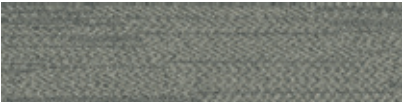
106949 IRON



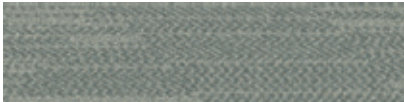
106950 FLANNEL



106951 CHARCOAL



106952 NATURAL



106953 NICKEL



106954 GRANITE



106955 STONE



106956 LINEN

## Specifications

Modular, 25cm x 1m	163380AK0G
Backing System	CQuest™GB
Yarn Manufacturer	Aquafil
Yarn System	100% Recycled Content Nylon
Color System	100% Solution Dye
Construction	Tufted Textured Loop
Preservative Protection	Intersept®
Soil/Stain Protection	Protekt2™
Pile Thickness	0.093 in., 2.4 mm
Pile Density	6,968
Total Recycled Content	83%
Indoor Air Quality	CRI Green Label Plus #GLP0820

## Installation Methods



ASHLAR



HERRINGBONE



**BROWSE IMAGES**  
**ORDER SAMPLES**



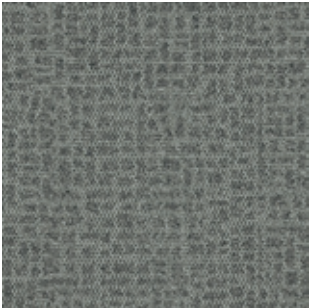
# Open Air™ 415 Colorline



107012 BLACK



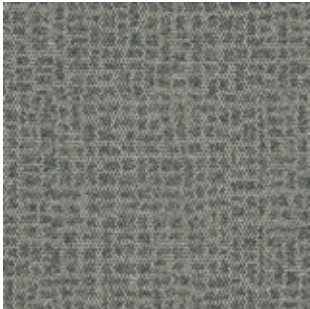
107013 IRON



107014 FLANNEL



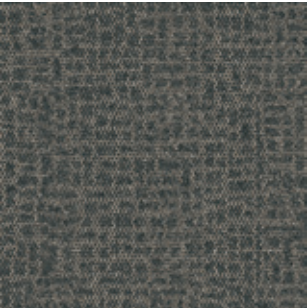
107015 CHARCOAL



107016 NATURAL



107017 NICKEL



107018 GRANITE



107019 STONE



107020 LINEN

## Specifications

Modular, 50cm x 50cm	163450250G
Backing System	CQuest™GB
Yarn Manufacturer	Aquafil
Yarn System	100% Recycled Content Nylon
Color System	100% Solution Dye
Construction	Tufted Textured Loop
Preservative Protection	Intersept®
Soil/Stain Protection	Protekt <sup>2</sup> ™
Pile Thickness	0.093 in., 2.4 mm
Pile Density	6,968
Total Recycled Content	83%
Indoor Air Quality	CRI Green Label Plus #GLP0820

## Installation Methods



MONOLITHIC



**BROWSE IMAGES**  
**ORDER SAMPLES**





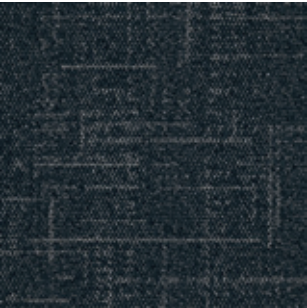
CARPET PRODUCT OPEN AIR 415 COLOR 107020 LINEN  
LVT PRODUCT LEVEL SET | TEXTURED STONES COLOR A00308 LIGHT CONCRETE INSTALLED MONOLITHIC







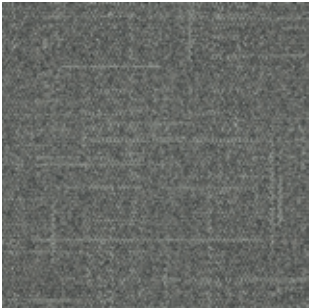
# Open Air™ 418 Colorline



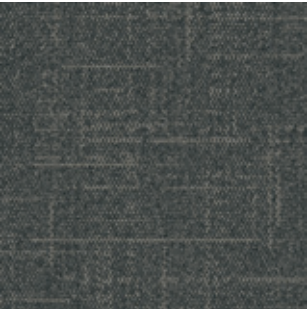
107039 BLACK



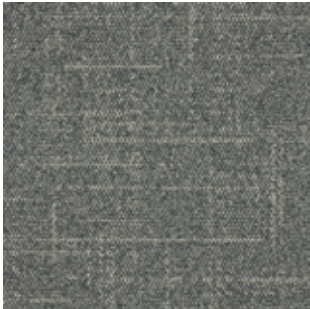
107040 IRON



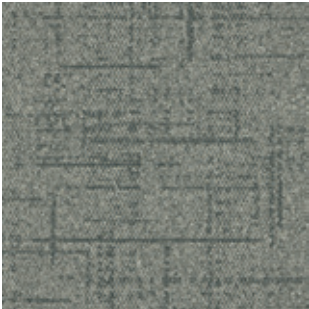
107041 FLANNEL



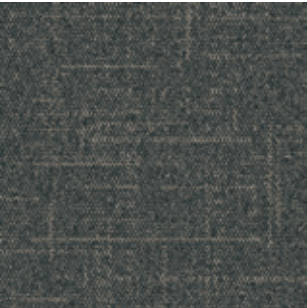
107042 CHARCOAL



107043 NATURAL



107044 NICKEL



107045 GRANITE



107046 STONE



107047 LINEN

## Specifications

Modular, 50cm x 50cm	147520250G
Backing System	CQuest™GB
Yarn Manufacturer	Aquafil
Yarn System	100% Recycled Content Nylon
Color System	100% Solution Dye
Construction	Tufted Textured Loop
Preservative Protection	Intersept®
Soil/Stain Protection	Protekt <sup>2</sup> ™
Pile Thickness	0.081 in., 2.1 mm
Pile Density	7,556
Total Recycled Content	83%
Indoor Air Quality	CRI Green Label Plus #GLP0820

## Installation Methods



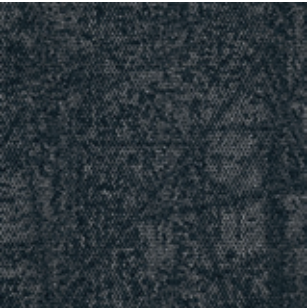
MONOLITHIC



**BROWSE IMAGES**  
**ORDER SAMPLES**



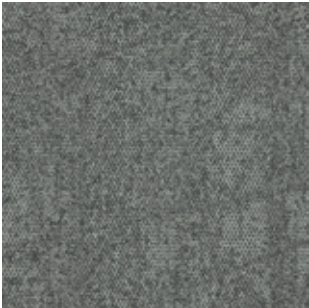
# Open Air™ 419 Colorline



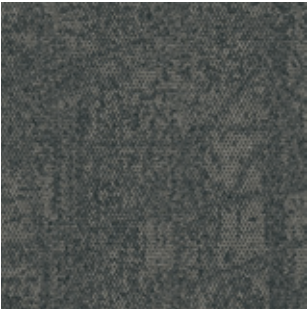
107048 BLACK



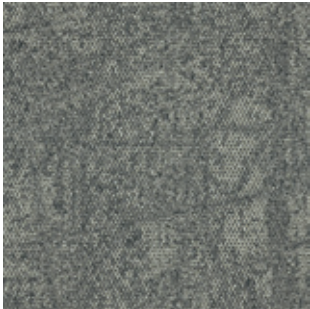
107049 IRON



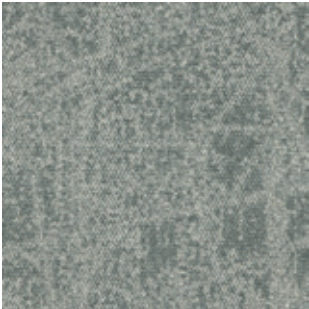
107050 FLANNEL



107051 CHARCOAL



107052 NATURAL



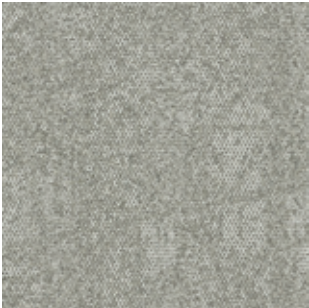
107053 NICKEL



107054 GRANITE



107055 STONE



107056 LINEN

## Specifications

Modular, 50cm x 50cm	147530250G
Backing System	CQuest™GB
Yarn Manufacturer	Aquafil
Yarn System	100% Recycled Content Nylon
Color System	100% Solution Dye
Construction	Tufted Textured Loop
Preservative Protection	Intersept®
Soil/Stain Protection	Protekt <sup>2</sup> ™
Pile Thickness	0.093 in., 2.4 mm
Pile Density	6,968
Total Recycled Content	83%
Indoor Air Quality	CRI Green Label Plus #GLP0820

## Installation Methods



MONOLITHIC



**BROWSE IMAGES**  
**ORDER SAMPLES**













**PRODUCT** OPEN AIR 416 **COLOR** 107026 NICKEL  
**PRODUCT** OPEN AIR 417 **COLOR** 107035 NICKEL **INSTALLED** NON DIRECTIONAL



## Why Our Modular Flooring?

---



### **i2® Modular Carpet**

*Minimize waste & save money.*

Interface's i2™ styles have mergeable dye lots. That means i2 tiles from different dye lots always blend with tiles of the same color, even when individual tiles are selectively replaced years later. This minimizes the need for attic stock and saves money. And i2 styles that install non directionally generate an average of only 1.5% installation waste as compared to 3-4% for typical modular carpet and an average of 14% for traditional roll carpet.



### **TacTiles™**

*No glue installation.* Our revolutionary TacTiles installation system eliminates the need for glue, adhering carpet tiles securely together to form a floor that “floats” for greater flexibility, easier replacement and long-term performance. The result? Less mess, less waste and virtually no VOCs, not to mention an environmental footprint that is over 90% lower than that of traditional glue adhesives. TacTiles are approved for use on GlasBac™, GlasBacRE, CQuest™GB, Graphlar™ and Graphlex™.



### **Intersept®**

*Mold protection.* Our proprietary preservative, Intersept, protects our modular carpet against mold growth and odor-causing bacteria—guaranteed. Intersept treated carpet, with proper maintenance, shows no mold or bacterial growth when tested per the ASTM E2471 Standard Test Method. Intersept is EPA approved for safe use in carpet, water insoluble and contains no halogens, heavy metals, phenols or formaldehyde. Intersept is standard in Interface carpet tile products backed with GlasBac, GlasBacRE, CQuestGB, ReadyBac™, and CushionBac Renew™.

### **Samples**

Order samples at [interface.com](http://interface.com). You'll receive email order confirmations, 24/7 access to order status and more. Not near a computer? You can also request samples by calling one of the numbers below.

United States  
1.877.605.1500

Canada  
1.866.398.3192

Brazil  
+ 5511.2196.0900

Latin America  
+ 52.55.6395.5100

### **[interface.com](http://interface.com)**

Register at [interface.com](http://interface.com) to:

- Browse products and order samples
- View carpet in a variety of room scenes
- Browse floor designs, change colors, view as a grid or in a room, download and share
- Check order status and inventory availability
- Sign up to get the latest information on Interface products and news

### **InterCircle Sample Return**

Help us close the loop on the carpet sampling process. Through our InterCircle Sample Return program, sample materials stay out of the landfill and are re-used as samples until it is time to recycle them into new carpet. By reducing sample production material and diverting old materials from the landfill, we can reduce our overall environmental footprint.

Call 1.877.605.1500 (U.S.) or 1.866.398.3192 (Canada) to order a sample return bag with a prepaid return label.





### ReEntry™

*Keep flooring out of landfills.* Through our ReEntry program, we reclaim our carpet tile and Sound Choice™ LVT. Vinyl backed carpet tile is recycled into new CQuest™GB carpet tile backing. The result? Carpet tile products with up to 85% total recycled content, including as much as 25% post-consumer content.



### Sustainability Transparency

Transparency and certified sustainability leadership come standard on Interface products, including published ingredients in HPDs (Health Product Declarations) and published EPDs (Environmental Product Declarations), which are based on full life cycle assessment (LCA). And, Interface carpet products are certified to the NSF 140 Sustainable Carpet Assessment Standard. Additionally, Interface flooring and recommended adhesives are 3rd party certified for low VOC emissions in compliance with California Department of Public Health (CDPH) Standard Method v1.2–2017. Carpet products made in our US facilities are made with 99% renewable energy.



### Carbon Neutral Floors™

The flooring products that we sell, including carpet tile, are carbon neutral across their full product life cycle through our third party verified Carbon Neutral Floors™ program. To find out more, visit [interface.com/carbonneutralfloors](http://interface.com/carbonneutralfloors).



#### Environmental Product Declaration (EPD) –

A statement of product ingredients and environmental impacts over the entire life cycle of a product. A comprehensive life cycle assessment (LCA) is performed to ISO standards to develop an EPD, after which both the EPD and LCA must be third party verified.



Gold Certified  
NSF 140 Sustainable Carpet Assessment Standard

**Sustainable Assessment for Carpet –** The only carpet sustainability standard in North America that evaluates the environmental impact of carpet for its entire lifecycle.



**CRI Green Label Plus –** An independent testing program that identifies carpet and adhesives with very low emissions of VOCs to help improve indoor air quality.



**RECYCLED**  
Paper made from  
recycled material  
FSC® C009723



PLEASE RECYCLE

Printed on 50% post consumer waste (PCW) fiber manufactured using wind power.

All product specifications reflect averages derived from product sample testing, are subject to normal manufacturing and testing tolerances and inherent pattern variances, and may be changed without notice. For more information about these and other important attributes of the product(s) described herein, including recycled content and product warranty information, please see [interface.com/disclaimer](http://interface.com/disclaimer).

We have tried our very best to accurately represent product colors. However, due to the nature of printed materials, color of actual products may vary slightly. Please request a sample to see actual product color.



**RECYCLED**  
Paper made from  
recycled material  
**FSC® C009723**



PLEASE RECYCLE

Printed on 50% post consumer waste (PCW)  
fiber manufactured using wind power.

We have tried our very best to accurately  
represent product colors. However, due to  
the nature of printed materials, color of actual  
products may vary slightly. Please request a  
sample to see actual product color.

**interface.com**

**United States Headquarters**

1280 West Peachtree Street NW  
Atlanta, GA 30309  
1.800.634.6032

**Canadian Headquarters**

233 Lahr Drive  
Belleville, ON K8N 5S2  
1.800.267.2149 ext.52128

**Brazilian Headquarters**

Av. Das Nações Unidas 14261  
25 andar, sala 25 -122, Brooklin Paulista  
São Paulo SP 04578 - 000  
Brasil  
+5511.2196.0900

**Latin American Headquarters**

Montes Urales # 415 Piso 6  
Lomas de Chapultepec  
Miguel Hidalgo, CDMX,  
11000 Mexico  
+ 52.55.2791.6812

CIM # IFS00872 03/2021



Climate change is undeniable. And  
reversible. Our mission is to prove it.  
**Join the #ClimateTakeBack and  
help create a climate fit for life.**