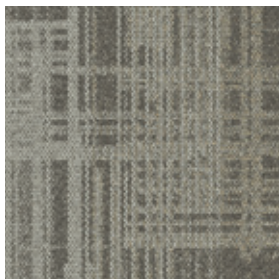


## AE310 Colorline



104621 MIST



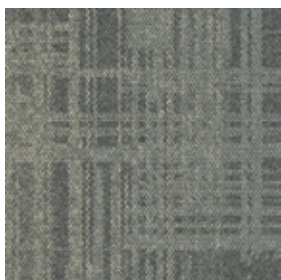
104622 FOG



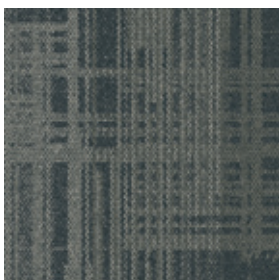
104623 TAUPE



104624 CHESTNUT



104625 GREIGE



104626 IRON



104627 SMOKE



104628 INK

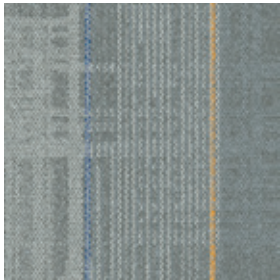
## Specifications **i2**

Modular, 50 cm x 50 cm	138820
Yarn Manufacturer	Aquafil
Yarn System	100% Recycled Content Nylon
Color System	100% Solution Dyed
Construction	Tufted Textured Loop
Preservative Protection	Intersept®
Soil/Stain Protection	Protekt <sup>2</sup> ®
Pile Thickness	0.100 in., 2.5 mm
Pile Density	5,760
Total Recycled Content	Up to 83% on CQuestGB
Indoor Air Quality	CRI Green Label Plus #GLP0820

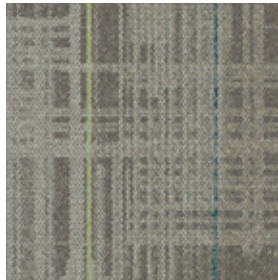


NON DIRECTIONAL

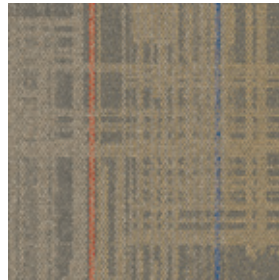
## AE312 Colorline



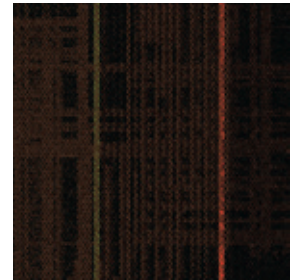
105405 MIST/ACCENT



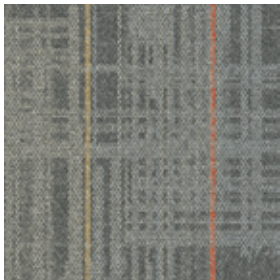
105406 FOG/ACCENT



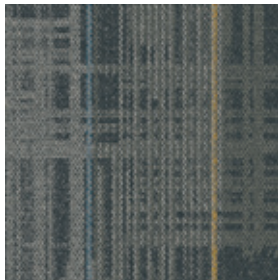
105407 TAUPE/ACCENT



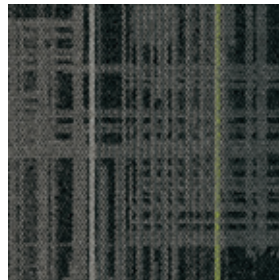
105408 CHESTNUT/ACCENT



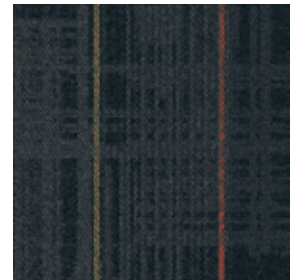
105409 GREIGE/ACCENT



105410 IRON/ACCENT



105411 SMOKE/ACCENT



105412 INK/ACCENT

## Specifications **i2**

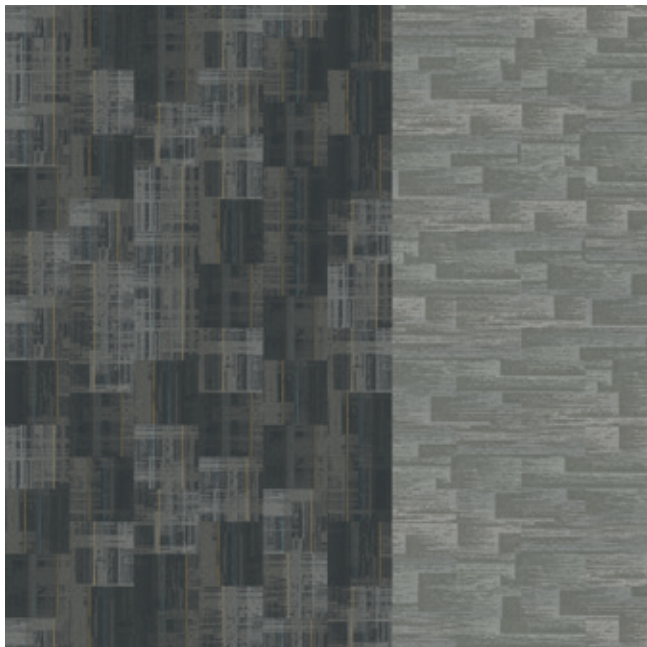
Modular, 50 cm x 50 cm  
Yarn Manufacturer  
Yarn System  
Color System  
Construction  
Preservative Protection  
Soil/Stain Protection  
Pile Thickness  
Pile Density  
Total Recycled Content  
Indoor Air Quality

138910  
Aquafil  
100% Recycled Content Nylon  
100% Solution Dyed  
Tufted Textured Loop  
Intersept®  
Protekt<sup>2</sup>®  
0.100 in., 2.5 mm  
5,760  
Up to 83% on CQuestGB  
CRI Green Label Plus #GLP0820

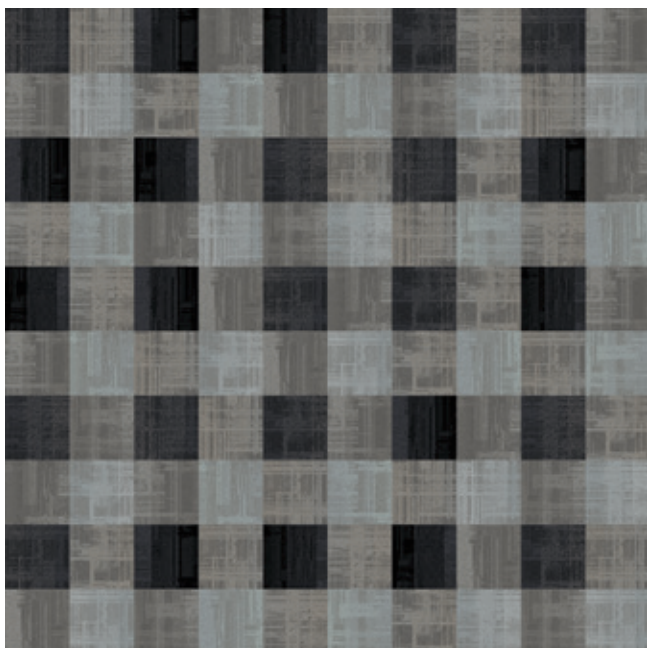
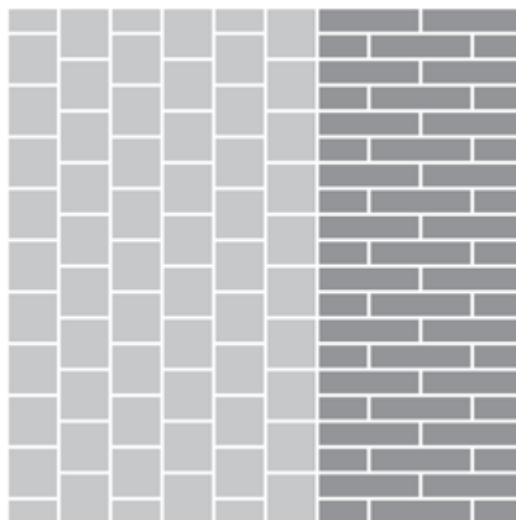


**Design Ideas** Below are floor layouts showing how to create the design ideas shared in some of the images featured in this brochure.

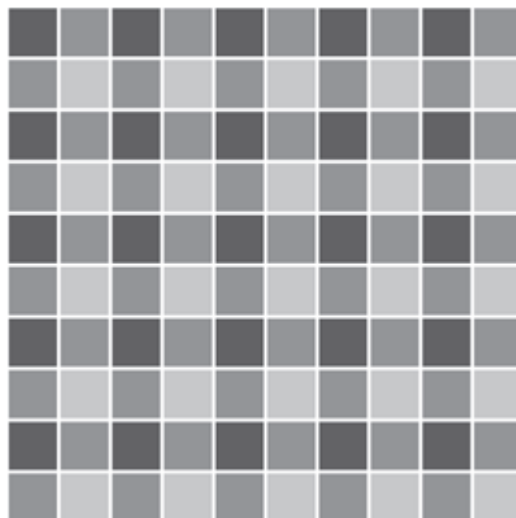
---



**PRODUCT** AE311 **COLOR** 104668 MIST **INSTALLED** ASHLAR  
**PRODUCT** AE312 **COLOR** 105410 IRON/ACCENT **INSTALLED** BRICK



**PRODUCT** AE310 **COLORS** 104621 MIST, 104625 GREIGE, 104628 INK **INSTALLED** PATTERN BY TILE (NON DIRECTIONAL)



## AE311 Colorline



104668 MIST



104669 FOG



104670 TAUPE



104671 CHESTNUT



104672 GREIGE



104673 IRON



104674 SMOKE



104675 INK

\*Please visit [www.interface.com](http://www.interface.com) to view more colors of AE311

## Specifications **i2**

Modular, 25 cm x 1 m	138830AK00
Backing System	GlasBac® Tile
Yarn Manufacturer	Aquafil
Yarn System	100% Recycled Content Nylon
Color System	100% Solution Dyed
Construction	Tufted Textured Loop
Preservative Protection	Intersept®
Soil/Stain Protection	Protekt <sup>2</sup> ®
Pile Thickness	0.097 in., 2.5 mm
Pile Density	5,567
Total Recycled Content	67%
Indoor Air Quality	CRI Green Label Plus #GLP0820





## AE313 Colorline



104879 MIST/ALOE



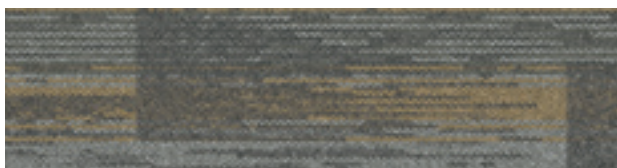
104880 FOG/CITRUS



104881 TAUPE/FLANNEL



104882 CHESTNUT/NAVY



104883 GREIGE/HONEY



104884 IRON/PRAIRIE



104885 SMOKE/APPLE



104886 INK/OLIVE

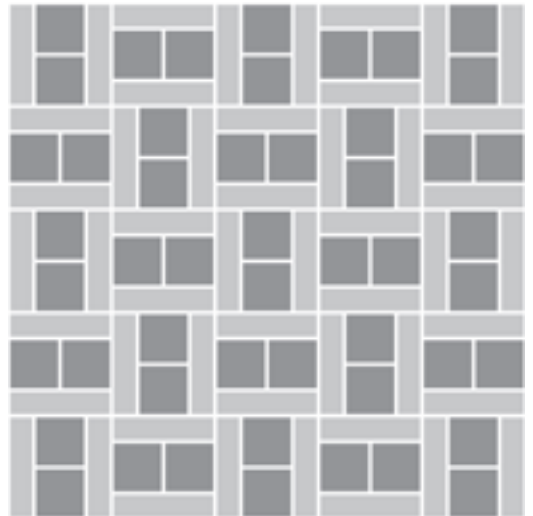
## Specifications **i2**

Modular, 25 cm x 1 m	163110AK00
Backing System	GlasBac® Tile
Yarn Manufacturer	Aquafil
Yarn System	100% Recycled Content Nylon
Color System	100% Solution Dyed
Construction	Tufted Textured Loop
Preservative Protection	Intersept®
Soil/Stain Protection	Protekt2®
Pile Thickness	0.119 in., 3.0 mm
Pile Density	4,840
Total Recycled Content	68%
Indoor Air Quality	CRI Green Label Plus #GLP0820

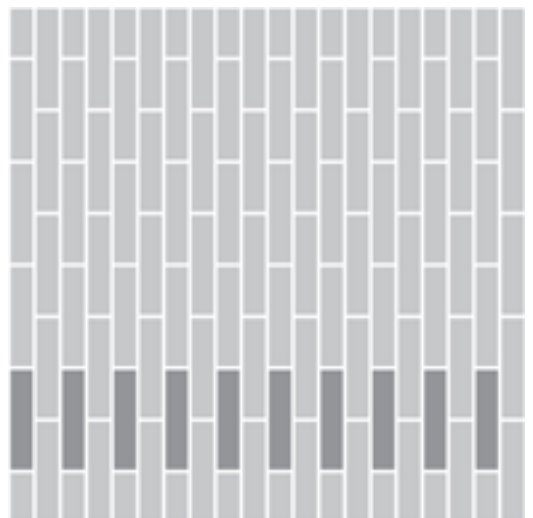
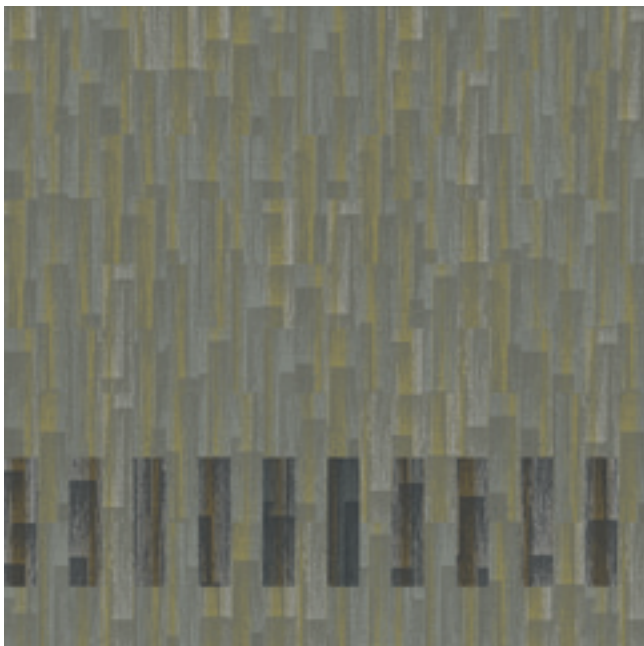


**Design Ideas** Below are floor layouts showing how to create the design ideas shared in some of the images featured in this brochure.

---



**PRODUCT** AE312 **COLORS** 105410 IRON/ACCENT  
**PRODUCT** AE310 **COLORS** 104626 IRON  
**INSTALLED** PATTERN BY TILE



**PRODUCT** AE313 **COLORS** 104879 MIST ALOE, 104884 IRON PRAIRIE **INSTALLED** PATTERN BY TILE

## Why Our Modular Carpet?



### i2® Modular Flooring

*Minimize waste & save money.* Interface's i2 styles have mergeable dye lots. That means i2 tiles from different dye lots always blend with tiles of the same color, even when individual tiles are selectively replaced years later. This minimizes the need for attic stock and saves money. And i2 styles that install non directionally generate an average of only 1.5% installation waste as compared to 3-4% for typical modular carpet and an average of 14% for traditional roll carpet.



### TacTiles™

*No glue installation.* Our revolutionary TacTiles installation system eliminates the need for glue, adhering tiles securely together to form a floor that "floats" for greater flexibility, easier replacement and long-term performance. The result? Less mess, less waste and virtually no VOCs, not to mention an environmental footprint that is over 90% lower than that of traditional glue adhesives.

**Third Party Certification**  
*Our Carbon Neutral Floors™ program is annually verified by a third party.*



**Environmental Product Declaration (EPD)** – A statement of product ingredients and environmental impacts over the entire life cycle of a product. A comprehensive life cycle assessment (LCA) is performed to ISO standards to develop an EPD, after which both the EPD and LCA must be third party verified.



### Intersept™

*Mold protection.* Our proprietary preservative, Intersept, protects our modular carpet against mold growth and odor-causing bacteria—guaranteed. Intersept treated carpet, with proper maintenance, shows no mold or bacterial growth when tested per the ASTM E2471 Standard Test Method. Intersept is EPA approved for safe use in carpet, water insoluble and contains no halogens, heavy metals, phenols or formaldehyde.



### ReEntry™

*Recyclable is now a reality.* Through our ReEntry program and partnerships with our fiber suppliers and recycling centers throughout North America, separated Type 6 and 6,6 nylon are recycled into new 6 and 6,6 nylon while separated GlasBac™, GlasBacRE, similar competitive backings and our own LVT are recycled into new GlasBacRE non-virgin PVC backing using our Cool Blue™ technology. The result? Products with up to 89% total recycled content, including as much as 27% post-consumer content.



**Sustainable Assessment for Carpet** – The only carpet sustainability standard in North America that evaluates the environmental impact of carpet for its entire lifecycle.



**CRI Green Label Plus** – An independent testing program that identifies carpet and adhesives with very low emissions of VOCs to help improve indoor air quality.



### Sustainable Choice

*Environmental responsibility.* More than 95% of Interface products manufactured in the Americas carry the GreenCircle Certified Environmental Facts label, which has verified that standard Interface products are manufactured using 99% renewable energy and offer a minimum of 66% and 80% total recycled content when backed with GlasBac and GlasBacRE backing respectively.

Transparency and certified sustainability leadership come standard on all Interface products, including published ingredients in HPDs (Health Product Declarations) or Declare Labels. In addition, more than 99% of our products globally have a published EPD (Environmental Product Declaration), which evaluates consistent factors based on full life cycle assessment (LCA). And, all Interface products with GlasBacRE backing are certified to the Platinum level of the NSF/ANSI 140 Sustainable Assessment for Carpet. GlasBac backed products meet the Gold level. NSF/ANSI 140 certified products contribute toward a USGBC or CaGBC LEED credit.



### Carbon Neutral Floors™

*Create a climate fit for life.* All Interface flooring sold globally is third party verified carbon neutral. We've taken a holistic approach to achieve carbon neutrality, first through reducing the carbon footprint of our products and then using carbon offsets for the remainder, including the emissions from raw materials, our manufacturing processes and product use to end of life.